



Series	4000	Warranty	3 Years
Volts	12	BCI	G27
Cells	6		
Terminal Type	DT		
Included Hardware	S/S Hex Cap Screw, Nut, Lock & Flat Washer		
Size & Thread	5/16"-18		

Charge

Charge Voltage Range	2.45-2.5 V/cell @ 25°C (77°F)
Float Voltage Range	2.25 V/cell @ 25°C (77°F)
Recommended Charge Current	15 A
Maximum Charge Current	25 A
Self-Discharge Rate	5%-10% per month at 25°C (77°F)

Capacity

Cold Crank Amps (CCA) 0°F / -18°C	660
Marine Crank Amps (MCA) 32°F / 0°C	825
Reserve Capacity (RC @ 25A)	185 Minutes
Reserve Capacity (RC @ 75A)	53 Minutes

Hour Rate	Capacity / AMP Hour	Current / AMPs
@ 100 Hour Rate	140 AH	1.4 A
@ 20 Hour Rate	105 AH	5.25 A
@ 15 Hour Rate	99 AH	6.58 A
@ 10 Hour Rate	89 AH	8.93 A
@ 8 Hour Rate	87 AH	10.89 A
@ 5 Hour Rate	85 AH	17.01 A
@ 1 Hour Rate	38 AH	37.8 A

Ampere hour capacity ratings based on specific gravity of 1.280 at 27°C (80°F). Reduce capacities 5% for specific gravity of 1.265 and 10% for 1.250.

Specifications



Weight	24.5 kg	54 lbs
Length	32.1 cm	12.63"
Width	17.1 cm	6.75"
Height Inc. Term.	23.8 cm	9.38"

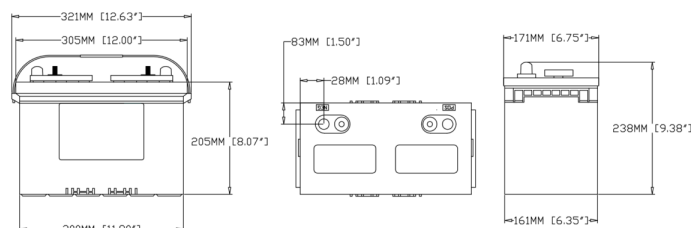
Product measurements & weights are calculated based on sample data. Individual specifications are subject to vary due to the manufacturing process & battery components.

Container	ABS
Cover	ABS
Handles	Plastic Strap

Voltage vs. Depth of Discharge

DISCHARGE	0%	25%	50%	75%	100%
20 HR AH RATE	2.10 V	2.07 V	2.00 V	1.92 V	1.75 V
10 HR AH RATE	2.10 V	2.06 V	1.98 V	1.89 V	1.75 V
3 HR AH RATE	2.10 V	2.03 V	1.95 V	1.86 V	1.75 V
1 HR AH RATE	2.10 V	2.01 V	1.93 V	1.84 V	1.75 V

Detailed Illustration



Rev.#1 | March 2019