



Series	AGM-R	Warranty	See Warranty Terms
Volts	2	BCI	
Cells	1		
Terminal Type		F10(M8)	
Included Hardware		M8 stainless bolts & washers	
Size & Thread		M8	

Charge

Charge Voltage Range	2.45 V/cell @ 25°C (77°F)
Float Voltage Range	2.3 V/cell @ 25°C (77°F)
Recommended Charge Current	30 A
Maximum Charge Current	40 A
Self-Discharge Rate	5%-10% per month at 25°C (77°F)
Internal Resistance	.80 mΩ

Capacity

Hour Rate	Capacity / AMP Hour	Current / AMPs
@ 20 Hour Rate	234 AH	11.7 A
@ 10 Hour Rate	200 AH	20 A
@ 5 Hour Rate	175 AH	35 A

Cut Off Voltage	Constant Current Discharge						
	1 hr	2 hr	3 hr	4 hr	5 hr	8 hr	10 hr
1.80 VPC	105.8	65.6	50	40.7	34	23.9	20

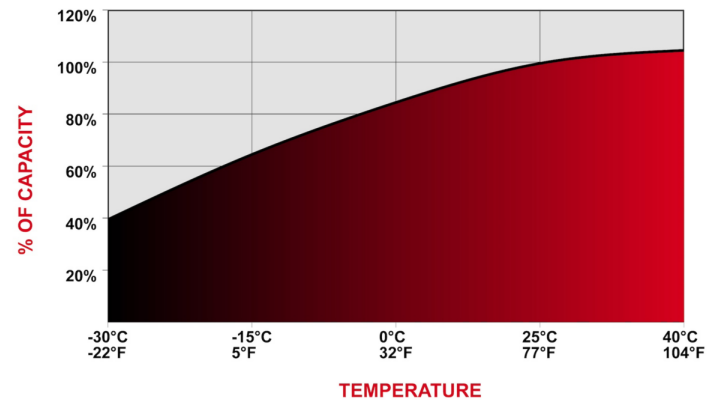
Specifications

 SAI GLOBAL ISO 9001 Quality	Weight	11 kg	24 lbs
	Length	17 cm	6.69"
	Width	10.6 cm	4.17"
	Height Inc. Term.	34.2 cm	13.5"

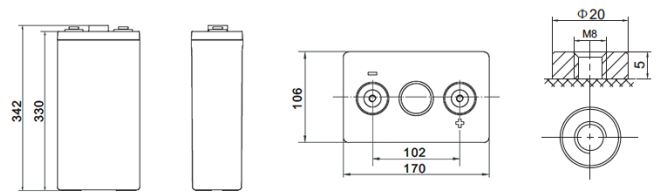
Product measurements & weights are calculated based on sample data. Individual specifications are subject to vary due to the manufacturing process & battery components.

Container	ABS
Cover	ABS
Handles	None

Capacity vs. Temperature



Detailed Illustration



F10 TERMINAL

